

**MATERIALS:**  
 RETRACTOR: STAINLESS STEEL  
 AND ALUMINUM  
 HOT TAP ASSEMBLY: STAINLESS STEEL  
 PROBE: 316 S.S.

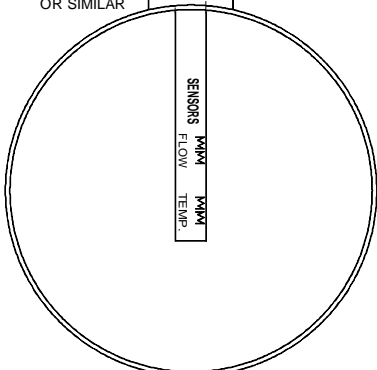
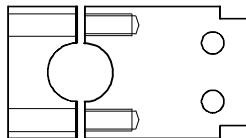
**DIMENSIONS:**  
 PROBE: 3/4" DIAM X 29" LENGTH


HOT TAPPING ASSEMBLY  
 FULL PORT BALL VALVE  
 PIPE NIPPLES

NOTE: OTHER CONNECTION TYPES  
 ARE AVAILABLE UPON REQUEST.

CUSTOMER PROVIDED 1" NPT THREAD-O-LET  
 OR SIMILAR

TWO BOLTS ATTACH THE TWO  
 GRIPPER PIECES TOGETHER.



 <b>Thermal Instrument Company</b> 217 Sterner Mill Road, Trevose, PA 19053, USA		
<b>DWG NO.:</b> RETRACTOR-GRIPPER-INSTALLED-12 INCH LINES AND SMALLER:3	<b>DESCRIPTION:</b> PROBE WITH RETRACTOR FOR ALL LINE SIZES 12" AND SMALLER.	
<b>ORIGINATION DATE:</b> 8/31/10	<b>DRAWN BY:</b> MJH	<b>APPROVED BY:</b> JC
<b>SCALE:</b> NONE	<b>MATERIAL:</b> AS NOTED	<b>PAGE:</b> 1 of 1